

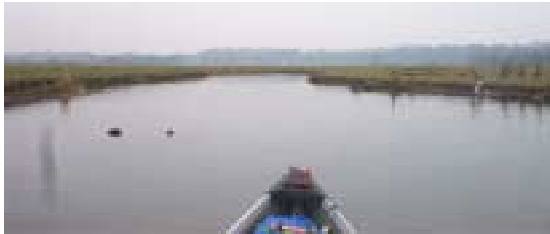
Guide to canoeing the Waveney, No.1

BUNGAY LOOP



Introduction

This guide is aimed to give you an enjoyable day paddling a canoe along the river Waveney around the "Bungay Loop".



From the Outney meadow Campsite upstream to the road bridge.

Background Information

- Some scholars believe that the river Waveney is one of the southern most valleys created in the last ice age.
- The area is widely used for quarrying sand and shingle deposited at the time of the ice age.
- The Waveney is a Natural river that flows from Lopham Fenn just west of Diss to Great Yarmouth.
- The river is home to a great deal of wildlife and further examples are given later.
- Follow this route on Ordnance Survey map OL 40 grid ref TM 334903 for Outney Meadow Campsite. Contact the site on 01986 892338

Wildlife

Canoeing is an excellent way to explore wildlife as you can get to places others can't and you can do it quietly. All of these can be seen on the river, but some are quite rare.

Swans. Can often be seen on the river. They are territorial so can swim in front of you, and then decide to turn back and swim past you. Swans on this part of the river are used to seeing people and are usually safe, but swans can be dangerous especially with their young. Keeping to one



side and quiet is a good idea.
Mute swan

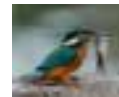


Whooper swan

Otters. Are rarely spotted, but are living on the river.



Kingfishers are nesting along the river, but they are easily scared so you will need to be quiet and observant to see them.



Hérons are often spotted on the river or flying overhead. They like the clear water for fishing.



Freshwater Mussel



Main types of fish include:

Rudd Perch Tench



Safety

Safety when near and on the water is always important. Follow guidance given to you from the hire centre and everyone should keep their buoyancy aids on.

This guide is written for paddling upstream from the Outney Meadow Campsite. (Upstream is paddling left as you stand on the bank of the river at Outney Meadow). Down stream there are several water features (weirs etc) that are dangerous and are not advised for those without qualified canoeing coaches.

If you follow the route of this guide you will start off paddling against the stream, but this is usually not too hard and when you get tired you can come back with the flow.

In an emergency

The river described here runs around Bungay Common, which means you could at any point get out and return to the campsite to raise the alarm. The outside bank is **private land and should not be landed on at any point.**

Other Points

There is a golf course on the common, so watch out for golf balls!

Please have respect for other users of the water and the land around. Ask fishermen which side to pass them on and do so quietly.



For more information about canoeing in your area contact The British Canoe Union.
Tel: 0115 9821100



Information correct at time of writing. No liability can be accepted for people following this guide.
L.Chapman Feb 2003

4. The river here is close to wild woodland. Keep an eye out for kingfishers, otters and herons. On the other side on clear day you have a really good view of the skyline of Bungay.



3. On this bend in the river there is often a rope swing, but we don't recommend you try it.

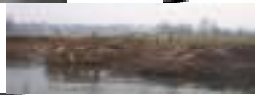


2. shortly there is a small channel to the right. Stay on the main river and under the small footbridge.

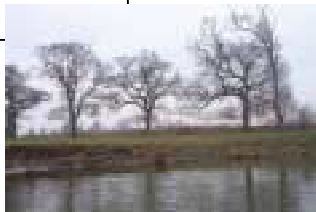
5. The river here can be shallow. There is usually plenty of clear water and you can easily see the bottom of the river.



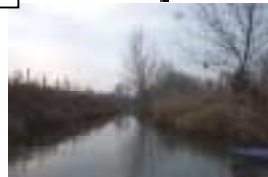
6. Here you can see the workings of the quarry, washing and grading gravel.



7. Note the row of oak trees. A row like this is quite special.




8. The debris on the fence shows the height of the water when the river floods.



1. Starting from the campsite, paddle upstream (*left*). There is a fork in the river follow the right channel. The left channel is called the old river. It is the original course of the river before the newer man made channel was dug to supply a mill.

9. This road bridge marks the end of the route we would recommend. During the summer it can be very shallow further upstream.

These photographs were taken in early spring, and therefore trees etc will look different at other seasons! 

The trip is **approximately 3 hours** paddling time, so why not take a picnic with you.

